

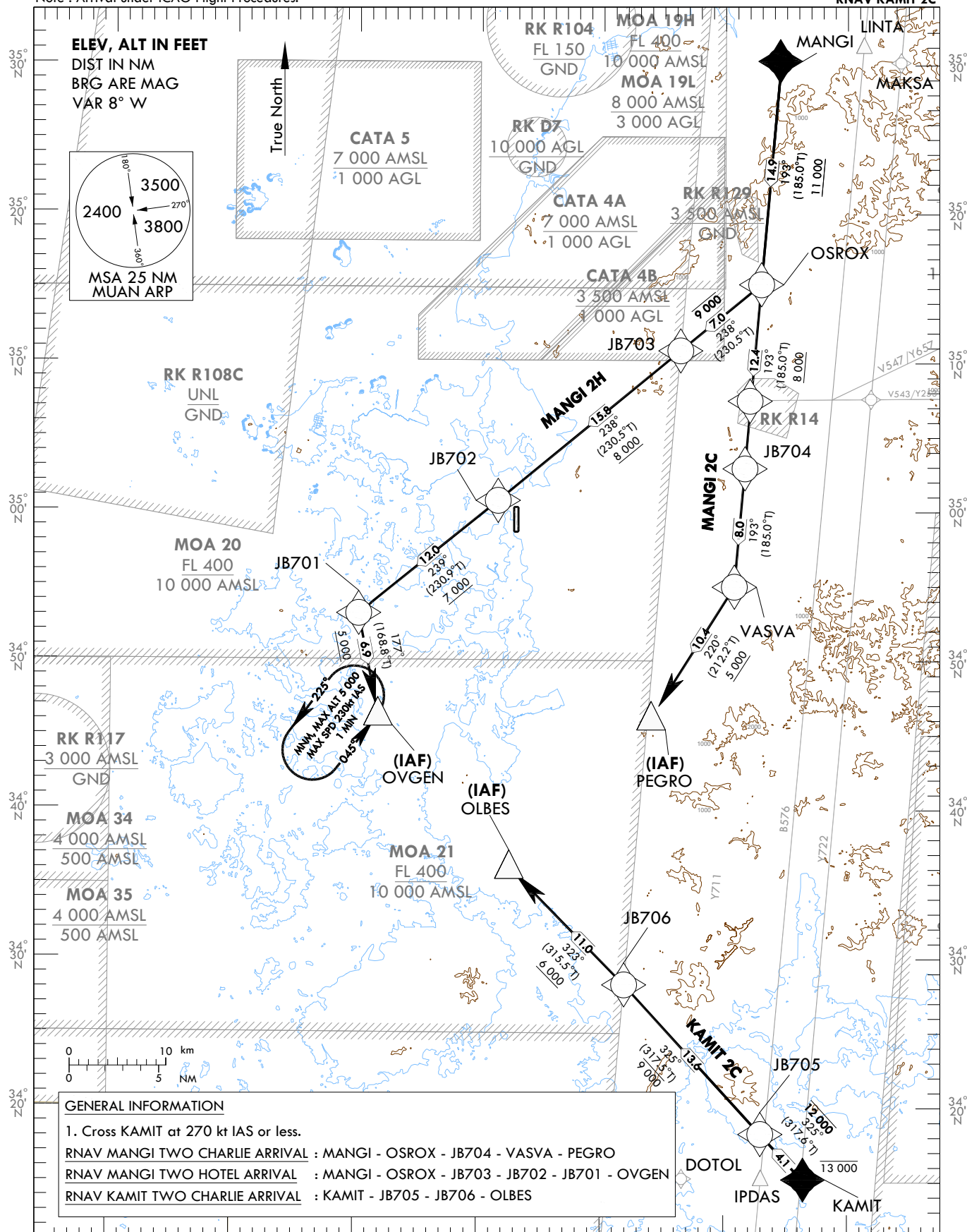
**STANDARD ARRIVAL CHART
INSTRUMENT(STAR) - ICAO**

TRANSITION ALT 14 000
TRANSITION LVL FL 140

GWANGJU APP 120.475 130.0
228.9 265.5
MUAN TWR 118.25 118.85

MUAN/Muan Intl(RKJB)
RWY 01
RNAV MANGI 2C
RNAV MANGI 2H
RNAV KAMIT 2C

Note : Arrival under ICAO Flight Procedures.



NOTE

1. RNAV 1 operation.
2. GNSS required.
3. ATS surveillance service required.

Change : Information of MANGI and KAMIT(reporting requirement).

MUAN/Muan Intl(RKJB)
RWY 01

RNAV MANGI 2C, RNAV MANGI 2H

RNAV KAMIT 2C, HOLDING PROCEDURE

AERONAUTICAL DATA TABULATION

Standard Instrument Arrival Procedure Coding Tables

RNAV MANGI 2C

Serial Number	Path Descriptor	Waypoint Identifier	Fly-over	Course/Track °M(°T)	Distance (NM)	Turn direction	Altitude (ft)	Speed (kt)	Coordinates	VPA/RDH	Navigation specification	Remarks
001	IF	MANGI	-	-	-	-	-	-	35°30'11.3"N 126°44'31.7"E	-	RNAV 1	-
002	TF	OSROX	-	193(185.0)	14.9	-	+11 000	-	35°15'18.1"N 126°42'56.2"E	-	RNAV 1	-
003	TF	JB704	-	193(185.0)	12.4	-	+8 000	-	35°02'56.4"N 126°41'37.3"E	-	RNAV 1	-
004	TF	VASVA	-	193(185.0)	8.0	-	-	-	34°54'59.5"N 126°40'46.8"E	-	RNAV 1	-
005	TF	PEGRO	-	220(212.2)	10.4	-	+5 000	-	34°46'09.0"N 126°34'02.1"E	-	RNAV 1	IAF

RNAV MANGI 2H

Serial Number	Path Descriptor	Waypoint Identifier	Fly-over	Course/Track °M(°T)	Distance (NM)	Turn direction	Altitude (ft)	Speed (kt)	Coordinates	VPA/RDH	Navigation specification	Remarks
001	IF	MANGI	-	-	-	-	-	-	35°30'11.3"N 126°44'31.7"E	-	RNAV 1	-
002	TF	OSROX	-	193(185.0)	14.9	-	+11 000	-	35°15'18.1"N 126°42'56.2"E	-	RNAV 1	-
003	TF	JB703	-	238(230.5)	7.0	-	-9 000	-	35°10'50.6"N 126°36'20.5"E	-	RNAV 1	-
004	TF	JB702	-	238(230.5)	15.8	-	+8 000	-	35°00'44.9"N 126°21'29.4"E	-	RNAV 1	-
005	TF	JB701	-	239(230.9)	12.0	-	+7 000	-	34°53'09.6"N 126°10'10.3"E	-	RNAV 1	-
006	TF	OVGEN	-	177(168.8)	6.9	-	+5 000	-	34°46'22.2"N 126°11'47.9"E	-	RNAV 1	IAF

RNAV KAMIT 2C

Serial Number	Path Descriptor	Waypoint Identifier	Fly-over	Course/Track °M(°T)	Distance (NM)	Turn direction	Altitude (ft)	Speed (kt)	Coordinates	VPA/RDH	Navigation specification	Remarks
001	IF	KAMIT	-	-	-	-	-13 000	-270	34°15'14.1"N 126°46'17.7"E	-	RNAV 1	-
002	TF	JB705	-	325(317.6)	4.1	-	-12 000	-270	34°18'14.7"N 126°42'58.8"E	-	RNAV 1	-
003	TF	JB706	-	325(317.5)	13.6	-	-9 000	-270	34°28'15.6"N 126°31'54.1"E	-	RNAV 1	-
004	TF	OLBES	-	323(315.5)	11.0	-	+6 000	-	34°36'08.1"N 126°22'32.0"E	-	RNAV 1	IAF

HOLDING PROCEDURE

Holding Identification	Path Descriptor	Waypoint Identifier	Fly-over	Course/Track °M(°T)	Time (min)	Turn direction	Altitude (ft)	Speed (kt)	Coordinates	VPA/RDH	Navigation specification	Remarks
RNAV MANGI 2H	HM	OVGEN	Y	045 (037.0)	1	L	@5 000	-230	34°46'22.2"N 126°11'47.9"E	-	RNAV 1	-

**STANDARD ARRIVAL CHART
INSTRUMENT(STAR) - ICAO**

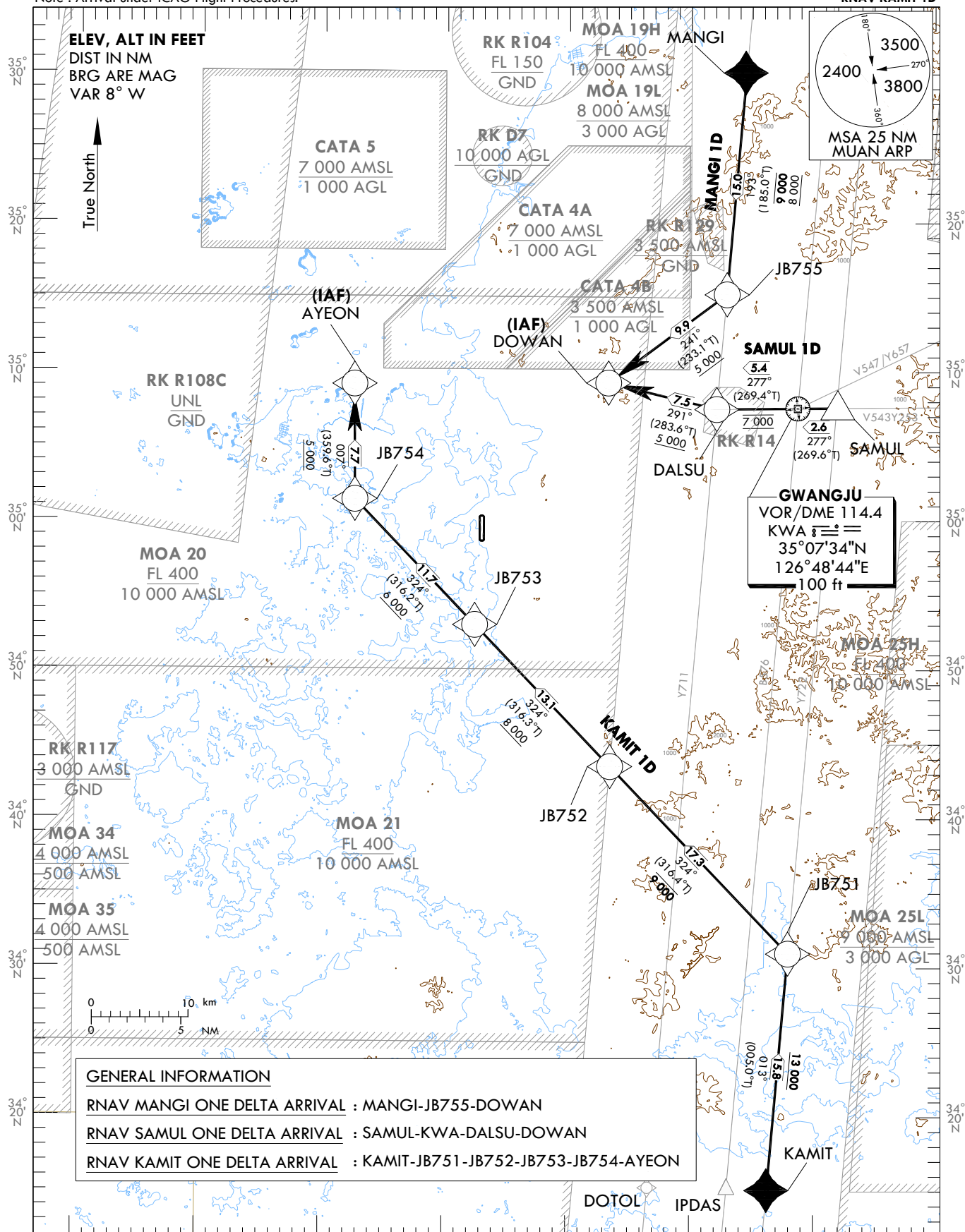
TRANSITION ALT 14 000
TRANSITION LVL FL 140

GWANGJU APP	120.475	130.0
	228.9	265.5
MUAN TWR	118.25	118.85

MUAN/Muan Intl(RKJB)

RWY 19
RNAV MANGI 1D
RNAV SAMUL 1D
RNAV KAMIT 1D

Note : Arrival under ICAO Flight Procedures.



NOTE

1. RNAV 1 operation.
2. GNSS required.
3. ATS surveillance service required.

Change : Information of MANGI, KAMIT(reporting requirement) and SAMUL(fix).

MUAN/Muan Intl(RKJB)
RWY 19
RNAV MANGI 1D, RNAV SAMUL 1D
RNAV KAMIT 1D

AERONAUTICAL DATA TABULATION

Standard Instrument Arrival Procedure Coding Tables

RNAV MANGI 1D

Serial Number	Path Descriptor	Waypoint Identifier	Fly-over	Course/Track °M(°T)	Distance (NM)	Turn direction	Altitude (ft)	Speed (kt)	Coordinates	VPA/ RDH	Navigation specification	Remarks
001	IF	MANGI	-	-	-	-	-	-	35°30'11.3"N 126°44'31.7"E	-	RNAV 1	-
002	TF	JB755	-	193(185.0)	15.0	-	-9 000 +8 000	-	35°15'13.4"N 126°42'55.7"E	-	RNAV 1	-
003	TF	DOWAN	-	241(233.1)	9.9	-	+5 000	-	35°09'16.1"N 126°33'16.0"E	-	RNAV 1	IAF

RNAV SAMUL 1D

Serial Number	Path Descriptor	Waypoint Identifier	Fly-over	Course/Track °M(°T)	Distance (NM)	Turn direction	Altitude (ft)	Speed (kt)	Coordinates	VPA/ RDH	Navigation specification	Remarks
001	IF	SAMUL	-	-	-	-	-	-	35°07'35.5"N 126°51'54.4"E	-	RNAV 1	-
002	TF	KWA	-	277(269.6)	2.6	-	-	-	35°07'34.4"N 126°48'43.6"E	-	RNAV 1	-
003	TF	DALSU	-	277(269.4)	5.4	-	@7 000	-	35°07'31.0"N 126°42'06.5"E	-	RNAV 1	-
004	TF	DOWAN	-	291(283.6)	7.5	-	+5 000	-	35°09'16.1"N 126°33'16.0"E	-	RNAV 1	IAF

RNAV KAMIT 1D

Serial Number	Path Descriptor	Waypoint Identifier	Fly-over	Course/Track °M(°T)	Distance (NM)	Turn direction	Altitude (ft)	Speed (kt)	Coordinates	VPA/ RDH	Navigation specification	Remarks
001	IF	KAMIT	-	-	-	-	-	-	34°15'14.1"N 126°46'17.7"E	-	RNAV 1	-
002	TF	JB751	-	013(005.0)	15.8	-	+13 000	-	34°30'57.9"N 126°47'58.1"E	-	RNAV 1	-
003	TF	JB752	-	324(316.4)	17.3	-	-9 000	-	34°43'31.2"N 126°33'28.6"E	-	RNAV 1	-
004	TF	JB753	-	324(316.3)	13.1	-	+8 000	-	34°53'01.3"N 126°22'26.0"E	-	RNAV 1	-
005	TF	JB754	-	324(316.2)	11.7	-	+6 000	-	35°01'25.8"N 126°12'36.4"E	-	RNAV 1	-
006	TF	AYEON	-	007(359.6)	7.7	-	+5 000	-	35°09'10.2"N 126°12'32.1"E	-	RNAV 1	IAF